

FIGURE 125 TRACTOR PROTECTION VALVE (MODEL M915).

TA215504

Current part is item (8) on diagram. Available at www.oshkoshequipment.com

SECTION II (1)	ITEM (2)	SMR (3)	FSCM (4)	PART NUMBER	(5)	DESCRIPTION AND USABLE ON CODE (UOC)	(6)
						GROUP:1208 AIR BRAKE SYSTEM	
						FIGURE 125. TRACTOR PROTECTION VALVE (MODEL M915)	
1	PAOZZ	24617	9422295			NUT, SELF-LOCKING, CO UOC:U21	2
2	PAOZZ	24617	2436162			WASHER, FLAT UOC:U21	2
3	PBOZZ	34623	MA242A-20186			PLATE, MOUNTING VALV UOC:U21	1
4	PAOZZ	24617	9419045			BOLT, MACHINE UOC:U21	2
5	PAOZZ	93061	68NTA-6-6			ADAPTER, STRAIGHT, PI UOC:U21, U22	3
6	PAOZZ	79470	3750X6			TEE, PIPE UOC:U21	2
7	PAOZZ	96906	MS14315-4			BUSHING, PIPE UOC:U21	2
8	PAOZZ	78330	1051			VALVE, TRACTOR PROTE UOC:U21	1
9	PAOZZ	93061	68NTA-6-8			ADAPTER, STRAIGHT, PI MALE UOC:U21	1
10	PAOZZ	96906	MS39158-7			ADAPTER, STRAIGHT, PI MALE UOC:U21	2

END OF FIGURE



Current part is item (8) on diagram. Available at www.oshkoshequipment.com

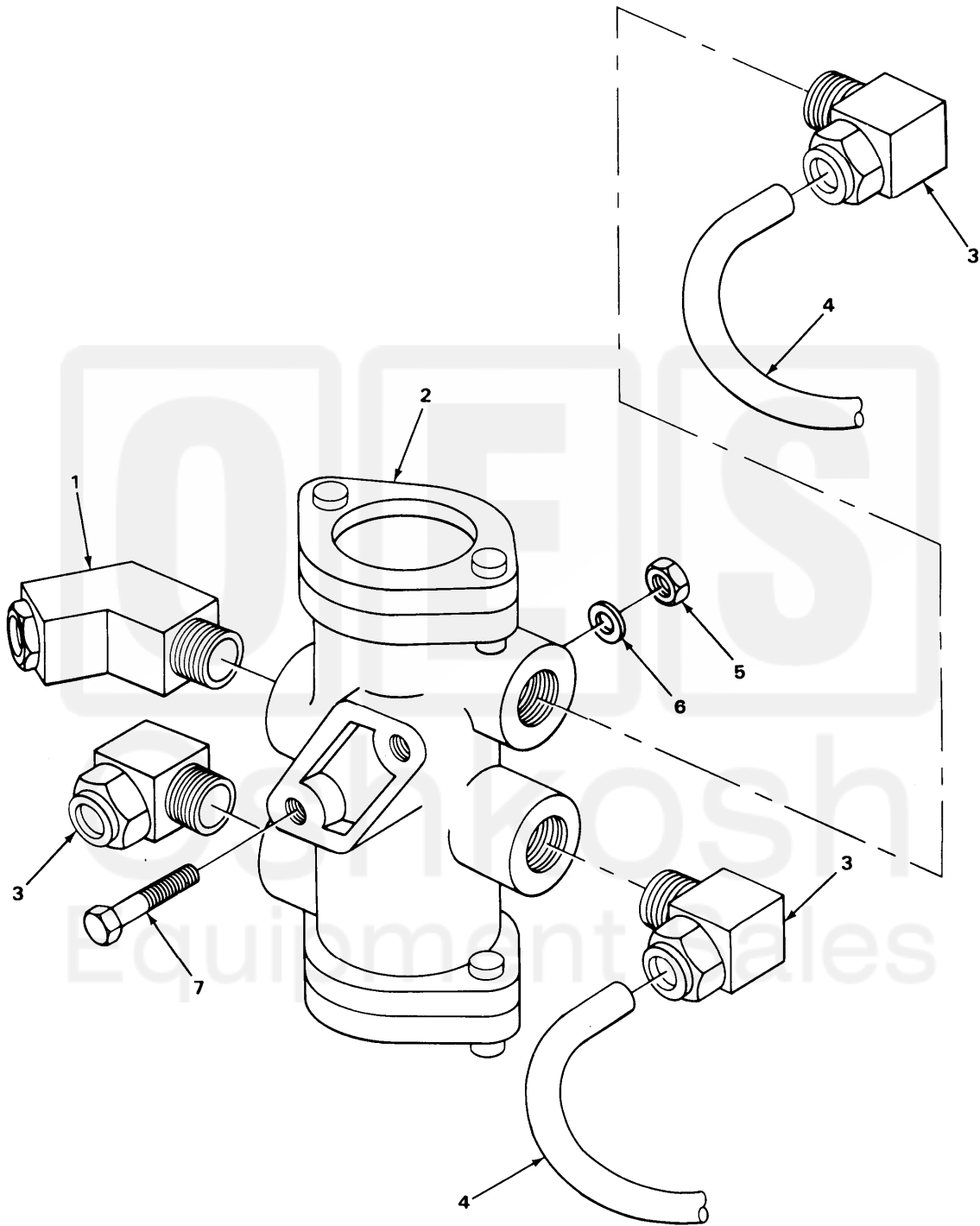


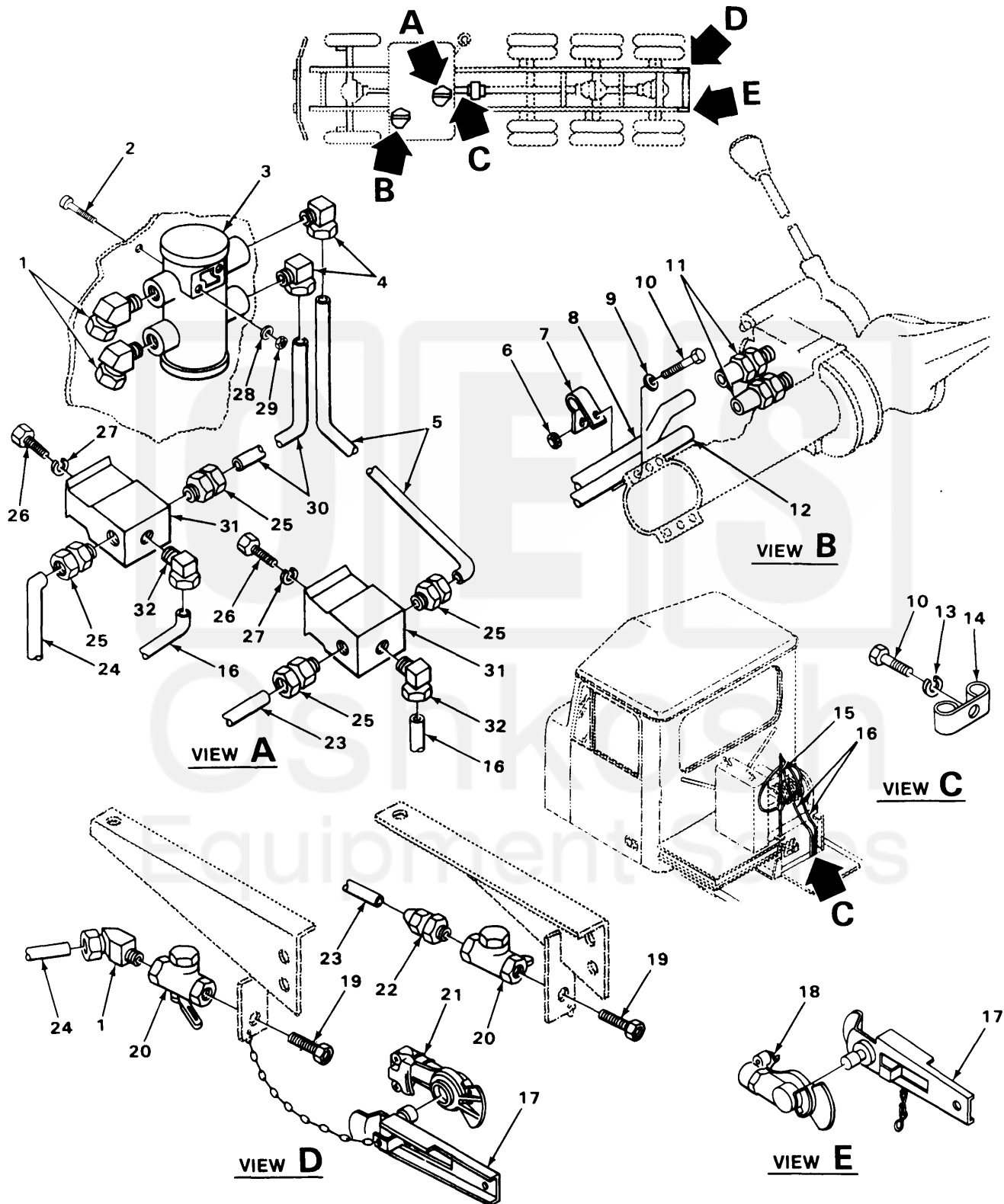
FIGURE 146. TRACTOR PROTECTION VALVE LINES AND FITTINGS (MODEL M916).

Current part is item (8) on diagram. Available at www.oshkoshequipment.com

SECTION II (1)	ITEM (2)	SMR (3)	FSCM (4)	PART NUMBER	(5)	DESCRIPTION AND USABLE ON CODE (UOC)	(6)
						GROUP:1208 AIR BRAKE SYSTEM	
						FIGURE 146. TRACTOR PROTECTION VALVE LINES AND FITTINGS (MODEL M916).	
1	PAOZZ	79470	1480X6X6		ELBOW UOC:U22		1
2	PAOZZ	78330	1051		VLAVE,TRACTOR PROTE UOC:U22		1
3	PAOZZ	79470	1480X6X8		ELBOW UOC:U22		3
4	MOOZZ	34623	M/357-20127		TUBE, NONMETALLIC MAKE FROM P/N 246115 UOC:U22		2
5	PAOZZ	24617	9422295		NUT, SELF-LOCKING, CO UOC:U22		2
6	PAOZZ	24617	2436162		WASHER, FLAT UOC:U22		2
7	PAOZZ	24617	9419043		SCREW, HEX HEAD UOC:U22		2
						END OF FIGURE	



Current part is item (8) on diagram. Available at www.oshkoshequipment.com



TA217102

FIGURE 179. TRACTOR Protection VALVE REAR Connection LINES AND FITTINGS (MODELS M917 AND M920).

SECTION II		TM9-2320-273-24P		(5)	(6)
(1)	(2)	(3)	(4)		
ITEM NO	SMR CODE	FSCM	PART NUMBER	DESCRIPTION AND USABLE ON CODES(UOC)	QTY
GROUP:1208 AIR BRAKE SYSTEM					
FIGURE 179. TRACTOR PROTECTION VALVE REAR CONNECTION LINES AND FITTINGS (MODELS M917 AND M920).					
1	PAOZZ	79470	1480X6X8	ELBOW.....	3
				UOC:U23,U26	
2	PAOZZ	24617	9419043	SCREW, CAP, HEXAGON.....	2
				UOC:U23,U26	
3	PAOZZ	78330	1051	VALVE,TRACTOR PROTE.....	1
				UOC:U23,U26	
4	PAOZZ	79470	1480X6X6	ELBOW.....	2
				UOC:U23,U26	
5	MOOZZ	34623	M/357-20127	TUBE,NONMETALLIC MAKE FROM P/N	1
				246115.....	
				UOC:U23,U26	
6	PAOZZ	24617	9422273	NUT.....	1
				UOC:U23,U26	
7	PAOZZ	75272	0 CV1313	CLAMP,LCCP.....	1
				UOC:U23,U26	
8	MOOZZ	34623	M/357-20064	TUBE,PLASTIC MAKE FROM P/N 246115..	1
				UOC:U23,U26	
9	PAOZZ	24617	2436161	WASHER,FLAT.....	1
				UOC:U23,U26	
10	PAOZZ	96039	1-4-20X3-4	SCREW,CAP,HEXAGON.....	2
				UOC:U23,U26	
11	PAOZZ	93061	68NTA-6-4	ADAPTER,STRAIGHT,PI.....	2
				UOC:U23,U26	
12	MOOZZ	34623	M/357-20068	TUBE,PLASTIC MAKE FROM P/N 246115..	1
				UOC:U23,U26	
13	PAOZZ	96906	MS35338-44	WASHER,LOCK.....	1
				UOC:U26	
14	PAOZZ	75272	COV-L309	CLAMP,LCCP.....	1
				UOC:U23,U26	
15	PAOZZ	79146	58H-11AM-1	TENDER,HOSE.....	1
				UOC:U23,U26	
16	PAOZZ	79146	0220060	HOSE ASSEMBLY,NONME.....	2
				UOC:U26	
17	PAOZZ	19207	7338409	DUMMY COUPLING,AUTO.....	2
				UOC:U23,U26	
18	PAOZZ	96906	MS35746-1	COUPLING HALF,QUICK.....	1
				UOC:U21,U26	
19	PAOZZ	79470	W05730	REDUCER,PIPE.....	2
				UOC:U23,U26	
20	PAOZZ	19207	10945045	VALVE,BALL.....	2
				UOC:U21,U26	
21	PAOZZ	34623	MA125-20033	TEE ASSEMBLY.....	1
				UOC:U22,U24,U25,U26	
22	PAOZZ	93061	68NTA-8-6	ADAPTER,STRAIGHT,PI.....	1
				UOC:U23,U26	
23	MOOZZ	34623	M/357-20129	TUBE,NONMETALLIC MAKE FROM P/N	2